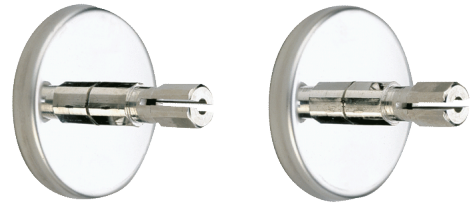


Fixing plate

Ref. 2392

For $\bar{\text{r}}$ 20mm tubes



DESCRIPTION

Fixing plate - Ref.2392

Pack of two fixing plates for $\bar{\text{r}}$ 20mm shower curtain rails.
To mount shower curtain rail assembly.
Concealed fixings via a 304 stainless steel fixing plate.
With push-fit connectors for mounting.
Supplied with 4 screws 4 x 30 and 4 rawl plugs.
10-year warranty.

ADVANTAGES



Easy to install

TECHNICAL CHARACTERISTICS

Fixing plate - Ref.2392

Diameter

\emptyset 18mm for \emptyset 20mm rails