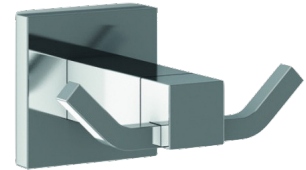


Double hanger chromed brass "Lucentum series"

Ref. GW05 12 06 02



DESCRIPTION

Double hanger chromed brass "Lucentum series" - Ref.GW05 12 06 02

Double hanger Lucentum Series.

The hanger consists of a wall support of 42 mm diameter and 3 mm thickness made in brass fastened by means of screws to the wall.

The wall plate covering the support element, which is fastened to it by means of one screw, is made in brass casting 50 x 50mm.

A squared form bar 19 x 19 mm with another bar which crosses its extreme 9 x 9 mm serves as the double hanger.

Both bars are manufactured in brass tube.

The assembled unit has a chromed plating finish, with 10 µm nickel + 0.15-0.3 µm chrome, that assures an adequate resistance to corrosion.

The product is fixed to a brick wall with the use of the abovementioned wall support, 2 nylon wall plugs and 2 screws.

The overall dimensions of the product are 50x112x66mm.

3- year warranty.

ADVANTAGES



Easy to fill



Comfort: retracting hand spray with 2 jets

TECHNICAL CHARACTERISTICS

Double hanger chromed brass "Lucentum series" - Ref.GW05 12 06 02

Inaltime	55 mm
Lungime	112 mm
Finisaj	Chromed brass
Depth	66 mm