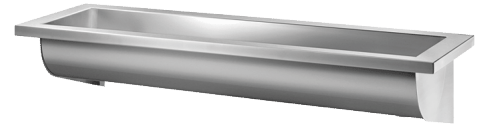


CANAL wall-mounted wash trough

Ref. 122250

Polished satin 304 stainless steel - L. 1200mm



DESCRIPTION

CANAL wall-mounted wash trough - Ref.122250

Wash trough for wall-mounting, 2 services - 1200mm.

Bacteriostatic 304 stainless steel.

Polished satin finish.

Stainless steel thickness: 0.8mm for the bowl, 1.5mm for surround and fixing brackets.

Easy to install: no joint concealers to install, lightweight trough.

Water controls can be installed wall-mounted or deck-mounted.

Drainage on the left.

Without tap hole.

Supplied with 1½" waste. Without overflow.

Supplied with fixings.

CE marked. Complies with European standard EN 14296.

Weight: 7.6kg.

10-year warranty.

ADVANTAGES



Bacteriostatic 304 stainless steel, smooth surface

TECHNICAL CHARACTERISTICS

CANAL wall-mounted wash trough - Ref.122250

Inaltime	245 mm
Lungime	1200 mm
Finisaj	Polished satin 304 stainless steel
Finisaj	Polished Satin Stainless Steel
Width	400 mm
Grosime	0.8 mm (cuve), 0.8 mm (bowl), 1.5 mm (surroundand fixing brackets).

