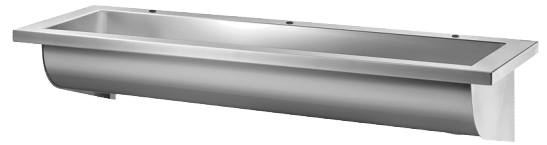


CANAL wall-mounted wash trough

Ref. 121280

Polished satin 304 stainless steel - L. 1800mm



DESCRIPTION

CANAL wall-mounted wash trough - Ref.121280

Wash trough for wall-mounting, 3 services - 1800mm.

Bacteriostatic 304 stainless steel.

Polished satin finish.

Stainless steel thickness: 0.8mm for the bowl, 1.5mm for surround and fixing brackets.

Easy to install: no joint concealers to install, light weight trough.

Water controls can be installed wall-mounted or deck-mounted.

Drainage on the right.

With x3 Ø 22mm tap holes.

Supplied with 1½" waste. Without overflow.

Supplied with fixings.

CE marked. Complies with European standard EN 14296.

Weight: 10.3kg.

10-year warranty.

ADVANTAGES



Bacteriostatic 304 stainless steel, smooth surface

TECHNICAL CHARACTERISTICS

CANAL wall-mounted wash trough - Ref.121280

| | |
|----------|---------------------------------------------------------------------|
| Inaltime | 245 mm |
| Lungime | 1800 mm |
| Finisaj | Polished satin 304 stainless steel |
| Finisaj | Polished Satin Stainless Steel |
| Width | 400 mm |
| Grosime | 0.8 mm (cuve), 0.8 mm (bowl), 1.5 mm (surroundand fixing brackets). |

