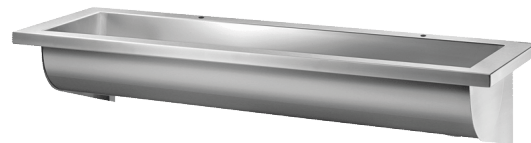


## Wall-mounted CANAL wash trough

Ref. 121250

Polished satin 304 stainless steel - L. 1200mm



### DESCRIPTION

#### Wall-mounted CANAL wash trough - Ref.121250

Wall-mounted wash trough for wall-mounting, for 2 services - 1,200mm. Bacteriostatic 304 stainless steel.

Polished satin finish.

Stainless steel thickness: 0.8mm for the bowl, 1.5mm for surround and fixing brackets.

Easy to install: no joint concealers to install, lightweight trough.

Drainage on the right.

With 2 tap holes Ø 22mm.

Supplied with 1½" waste. Without overflow.

Supplied with fixing elements.

CE marked. Complies with European standard EN 14296.

Weight: 7.6kg.

10-year warranty.

### ADVANTAGES



Bacteriostatic 304 stainless steel, smooth surface

### TECHNICAL CHARACTERISTICS

#### Wall-mounted CANAL wash trough - Ref.121250

Inaltime	250 mm
Lungime	1200 mm
Finisaj	Polished satin 304 stainless steel
Finisaj	Polished Satin Stainless Steel
Width	400 mm
Grosime	1 mm (bowl) and 1.5 mm (surround and fixing brackets)

