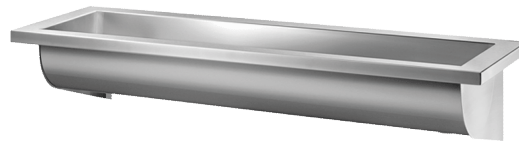


CANAL wall-mounted wash trough

Ref. 120260

Polished satin 304 stainless steel - L. 1400mm



DESCRIPTION

CANAL wall-mounted wash trough - Ref.120260

Wall-mounted wash trough for wall-mounting, for 2-3 services - L. 1,400mm
Bacteriostatic 304 stainless steel.

Polished satin finish.

Stainless steel thickness: 0.8mm for the bowl, 1.5mm for surround and fixing brackets.

Easy to install: no joint concealers to install, lightweight trough.

Water control can be wall-mounted or deck-mounted.

Drainage on the right.

Without tap hole.

Supplied with 1½" waste. Without overflow.

Supplied with fixing elements.

CE marked. Complies with European standard EN 14296.

Weight: 8.5kg.

10-year warranty.

ADVANTAGES



Bacteriostatic 304 stainless steel, smooth surface

TECHNICAL CHARACTERISTICS

CANAL wall-mounted wash trough - Ref.120260

Inaltime	250 mm
Lungime	1400 mm
Finisaj	Polished satin 304 stainless steel
Finisaj	Polished Satin Stainless Steel
Width	400 mm
Grosime	1 mm (basin) and 1.5 mm (edge and fixing brackets)

