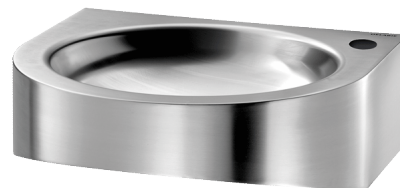


## PMR XS wall-mounted washbasin

Ref. 123400

Polished satin 304 stainless steel





### DESCRIPTION

#### PMR XS wall-mounted washbasin - Ref.123400

Wall-mounted washbasin.  
 Basin internal diameter: 310mm.  
 Bacteriostatic 304 stainless steel.  
 Polished satin finish.  
 Stainless steel thickness: 1.2mm.  
 Rounded edges prevent injury.  
 With Ø 35mm right tap hole.  
 Supplied with 1¼" waste.  
 Without overflow.  
 Supplied with fixings.  
 CE marked. Complies with European standard EN 14688.  
 Weight: 3.9kg.  
 10-year warranty.

### ADVANTAGES

-  Bacteriostatic 304 stainless steel, smooth surface
-  Rounded edges prevent injury

### TECHNICAL CHARACTERISTICS

#### PMR XS wall-mounted washbasin - Ref.123400

Inaltime	150 mm
Lungime	400 mm
Finisaj	Polished satin 304 stainless steel
Finisaj	Polished Satin Stainless Steel
Width	390 mm
Grosime	1.2 mm

