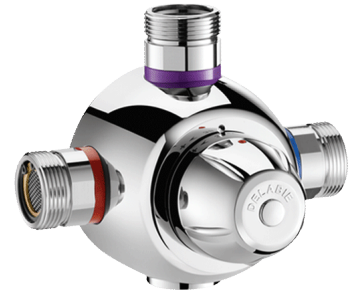


## PREMIX COMFORT

Ref. 731400

Group thermostatic mixing valve, mixed water 32°-42°C






### DESCRIPTION

#### PREMIX COMFORT - Ref.731400

Group thermostatic mixing valve for mixed water distribution from 32° to 42°C:  
 Anti-scalding safety.  
 Regulation of temperature variations.  
 Non-return valves and filters accessible from the exterior without having to remove the mechanism.  
 Thermal cartridge with no specific lever needed (push-button on the control knob).  
 Interchangeable cartridge with automotive cell.  
 High-resistance chrome-plated brass body.  
 Maximum hot water temperature: 85°C.  
 Differential hot water / mixed water: 15°C mini.  
 Pressure differences at the entrance: 1 bar maximum (0.5 bar recommended).  
 Minimum pressure / maximum: 1 to 10 bar (1 to 5 bar recommended).  
 Left hand side hot water inlet (red ring) and right hand side cold water inlet (blue ring).  
 Mixed water outlet at the top (purple ring).  
 For bottom outlet: unscrew / place lid at the top and outlet connector at the bottom.  
 Maximum temperature limiter, can be adjusted by the installer.  
 Reduced risk of scalding by limiting temperature at the point-of-use.  
 140 lpm - M1¼".  
 10-year warranty.

### ADVANTAGES

-  Automatic shut-off if cold water fails Temperature stability
-  Accessible filters and non-return valves
-  Automotive thermo-reactive cell

### TECHNICAL CHARACTERISTICS

#### PREMIX COMFORT - Ref.731400

|            |              |
|------------|--------------|
| Technology | Thermostatic |
| Height     | 107 mm       |
| Length     | 180 mm       |
| Flow rate  | 140 lpm      |
| Connector  | M1"1/4       |
| Depth      | 26 mm        |

