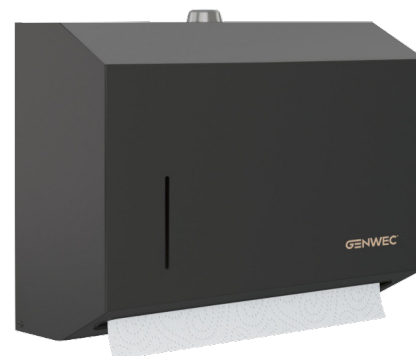


Paper towel dispenser small size 304 stainless steel matt black

Ref. GW03 04 04 03



DESCRIPTION

Paper towel dispenser small size 304 stainless steel matt black -

Ref.GW03 04 04 03

The dispenser of folded paper towels is made up of a cover and a support that are attachable to a wall. The cover, made in AISI 304 stainless steel matt black with a brushed finish, includes a content viewer on the front. The wall mount is made in AISI 304 stainless steel matt black. The paper towels are replaced by inserting a key in the slot on the top of the dispenser and turning it 90° in order to lift the cover. The paper towels used are folded and type ÔÓ or ÔÓ. It is fixed to the wall by means of 4 screws, with universal wall plugs for brick walls, located on the product's wall mount

ADVANTAGES

TECHNICAL CHARACTERISTICS

Paper towel dispenser small size 304 stainless steel matt black -

Ref.GW03 04 04 03

Height	203
Length	279
Finish	Matt black
Width	102