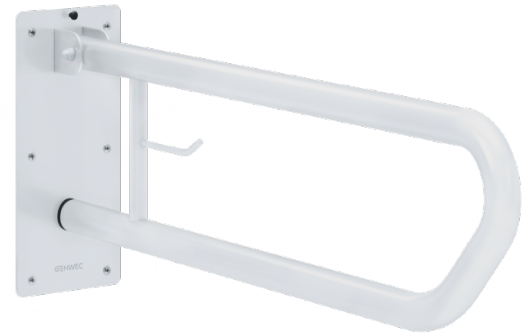


Folding bar 600mm w/paper dispenser white steel

Ref. GW11 08 03 00

White epoxy






DESCRIPTION

Folding bar 600mm w/paper dispenser white steel - Ref.GW11 08 03 00

Vertical folding bar with gradual breaking system incorporated. This horizontal installation bar is composed of carbon steel tubing with 32 mm of diameter and 1.5 mm of thickness. The tube has been bent as a U-shape and it is reinforced by a joist with a paper hanger located in the middle. The wall support is composed of carbon steel plate with 3mm of thickness, and two carbon steel hinges with 3 mm of thickness using to turn the folding bar. All the pieces have been welded by TIG method. There are 6 bores on the wall mounted to support the bar on the wall. All the pieces of the bar have a white epoxy painted finish. The folding bar complies the ADA regulation. The bar is fixed to the wall with 6 nylon plugs of 10X60 and AISI304 stainless steel screws of 8X70 with hexagonal head. Grab bar will support loads in excess of 120Kg if properly installed. The total measures of the product are 300x100x800 mm.

ADVANTAGES

-  Anti-vandalism product.
-  Heavy duty
-  Gradual breaking system.

TECHNICAL CHARACTERISTICS

Folding bar 600mm w/paper dispenser white steel - Ref.GW11 08 03 00

Height	300mm
Length	800
Finish	White epoxy
Depth	100mm
Thickness	1.5mm
Diameter	32mm
Destination	For WCs