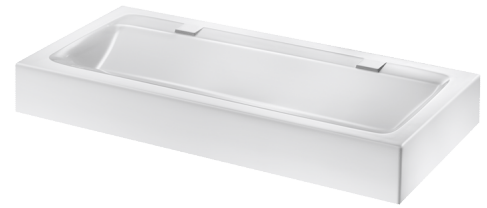


Wall-mounted MINERALCAST wash trough

Ref. 454120

MINERALCAST - 2 posts - L. 1200mm



DESCRIPTION

Wall-mounted MINERALCAST wash trough - Ref.454120

Wall-mounted wash trough for wall-mounting, for 2 services.
MINERALCAST: composite material consisting of natural minerals and polyester resin.

Ideal for use in public and commercial places.

Uniform, non-porous surface is easy to clean.

One-piece cast washbasin, seam-free, for easy maintenance and better hygiene.

Pleasant to the touch.

Without tap hole.

Supplied with 1½" waste. Without overflow.

Supplied with fixing elements.

White, RAL 9016.

Weight: 64kg.

10-year warranty.

ADVANTAGES



MINERALCAST: uniform, non-porous surface

TECHNICAL CHARACTERISTICS

Wall-mounted MINERALCAST wash trough - Ref.454120

| | |
|--------|-------------|
| Height | 148 mm |
| Length | 1200 mm |
| Finish | Mineralcast |
| Width | 570 mm |

